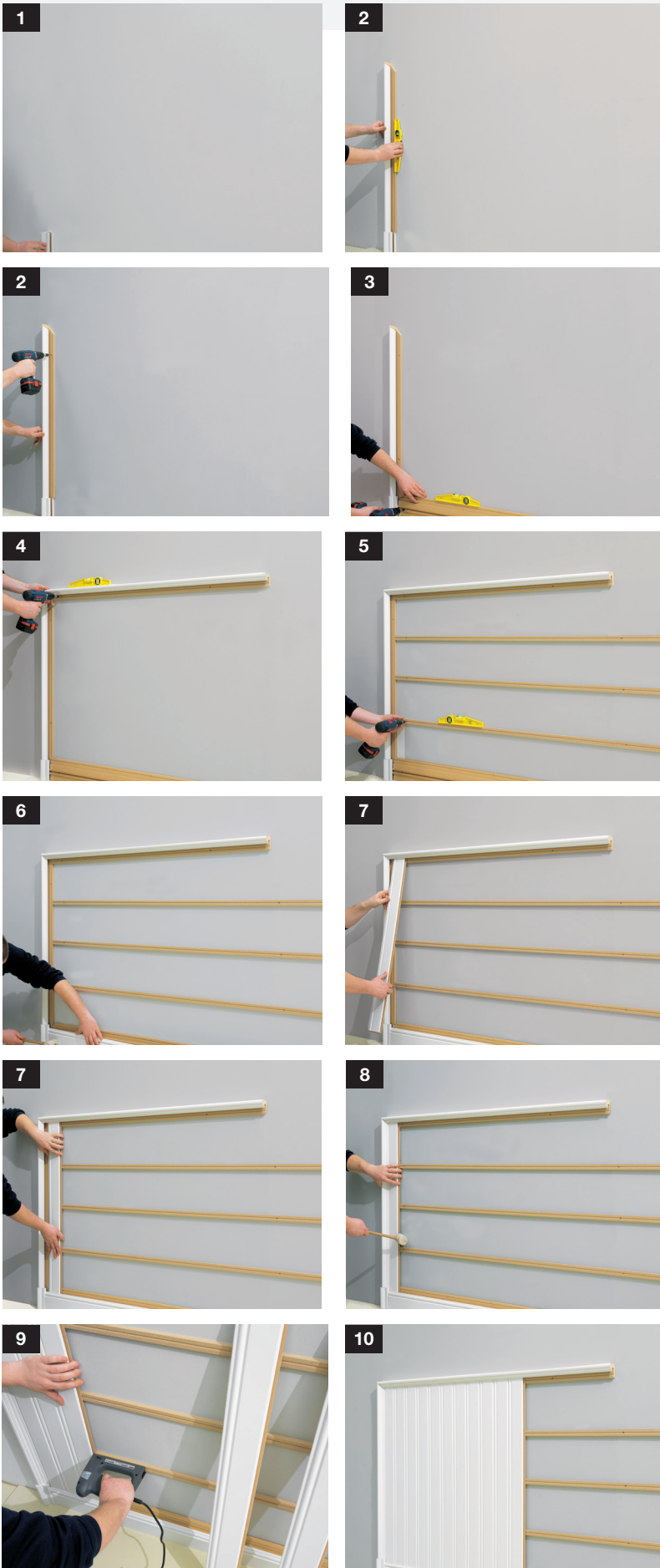


# INSTALLATION INSTRUCTIONS PANELING

WWW.MAESTRO-PANEL.BE



**1** Fix the finishing block (stop profile) to the wall where you want the panelling to end.

**2** Determine the height of the panelling to be installed and saw to size if necessary. Saw a cornice to the right height and fix it to the stop profile.

**3** Fix the fixation profile to the bottom of your wall, saw it to size if necessary.

**4** Fix a cornice to the top as well, saw it to size if necessary.

**5** Fix the three middle profiles to the wall, with a mutual distance of maximum 30 cm.

**6** Fix the skirting onto the fixation profile. Saw to the right length if necessary.

**7** Slide the first section of panelling upwards first, and then push in downwards.

**8** Slide the panel into the vertical cornice.

**9** Then install the rest of the panels and fix them with staples or screws.

**10** You can now easily paint your panelling. Lightly sand the panelling and use a primer before painting.

**Note:** the panelling can also be installed from step 4 when working between two walls.

**Note:** If you have a corner in your room, you are recommended to finish this with a corner piece, which you can bend into an inside or outside corner profile.